

# My Server Setup

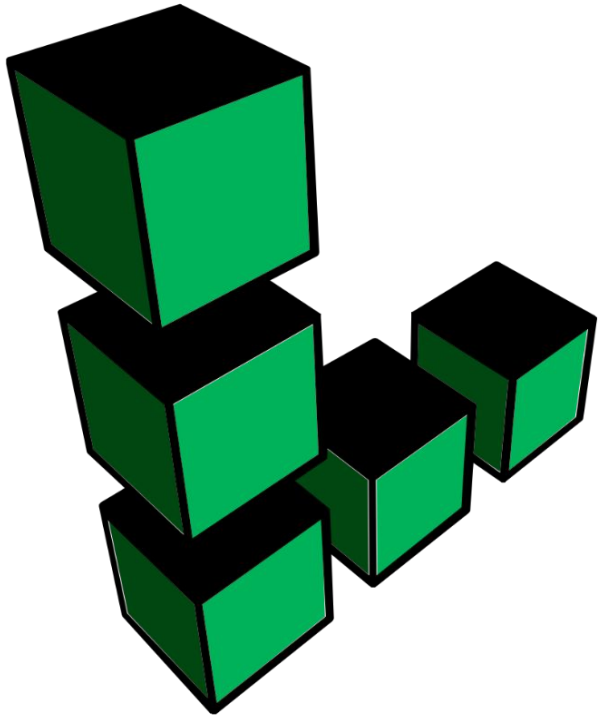
Ben Goldberg



# What I Host

- Websites
- Discord bots
- Web apps
- Calendar/Contacts sync

# Hosting

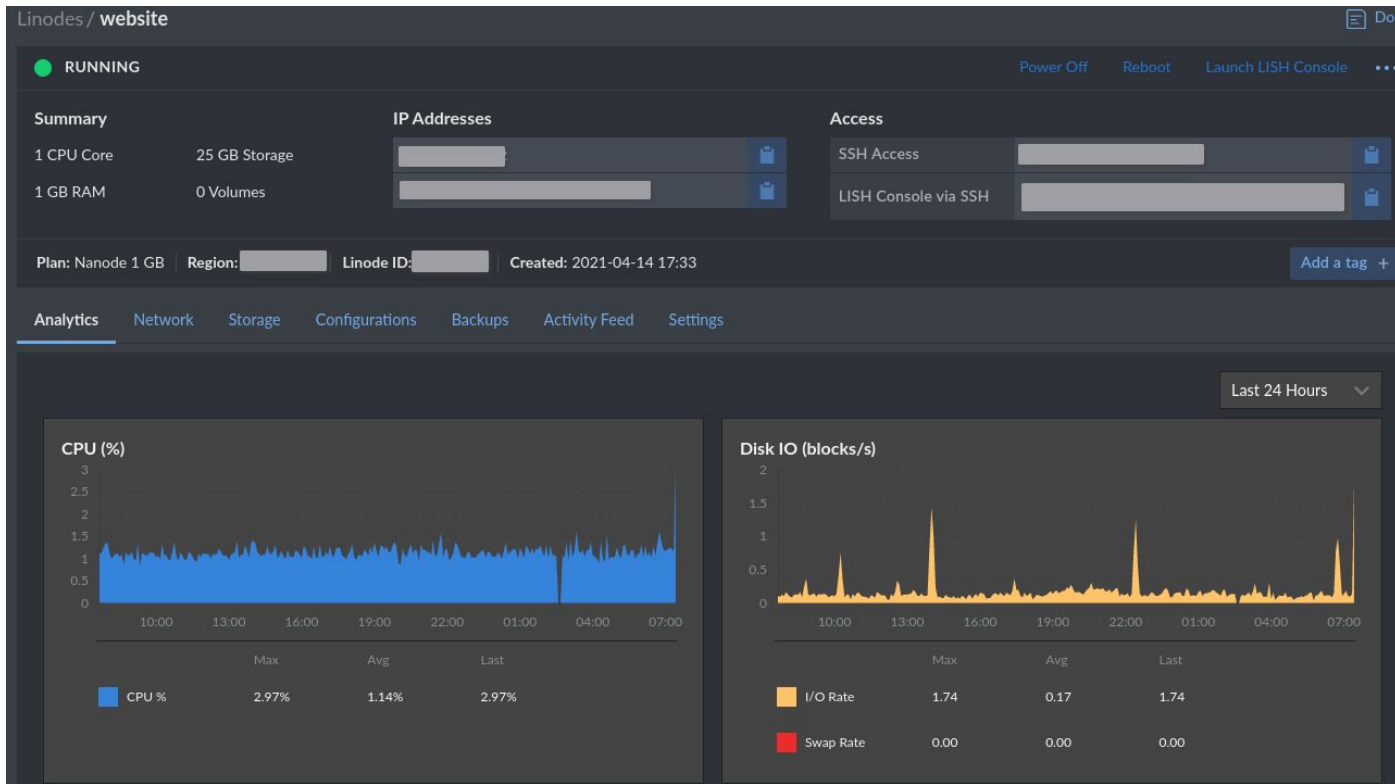


# linode

# Linode

- Independent
- Good interface
- Competitive price
- Good uptime
- Manages both VPSs and DNS

# Linode Dashboard



Distro



alpine  
linux

# Alpine Linux

- Simple
  - OpenRC instead of Systemd
  - Very few packages installed by default
  - Easy docker setup
- Stable
- Small by default
- Secure

# My Server Config

- All config files in one repo
- Pushed to server via SSH
- All services managed via docker-compose

Follow along here: [github.com/RITlug/bens-server-config](https://github.com/RITlug/bens-server-config)





# Server Setup

```
# Update system
apk -U upgrade
# Installed docker and docker-compose
apk add docker docker-compose

# Start docker daemon on boot
rc-update add docker boot
# Start docker daemon now
service docker start

# Install cron job
ln -s /root/gmi-crates-update.sh /etc/periodic/daily/
```

*That's it!*

# Start Everything

```
docker-compose up -d
```

*We Zoomin'!*

# docker-compose

```
nginx:
  image: nginx:alpine
  restart: unless-stopped
  environment:
    - NGINX_ENTRYPOINT_QUIET_LOGS=1
  ports:
    - "80:80"
    - "443:443"
  volumes:
    - /srv/www:/var/www
    - ./benaaron.dev.conf:/etc/nginx/conf.d/benaaron.dev.conf
    - ./sashnoraay.conf:/etc/nginx/conf.d/sashnoraay.conf
    - ./fullchain.pem:/fullchain.pem
    - ./privkey.pem:/privkey.pem
```

# Data

All data store in *data/* folder for easy backup and restore

# Nginx

```
server {
    listen      80;
    listen      443 ssl http2;
    server_name benaaron.dev;
    root        /var/www/benaaron.dev;
    index       index.html;
    error_page  404 /404.html;
    gzip        on;
    server_tokens off;
    charset     utf-8;

    add_header Permissions-Policy 'interest-cohort=()';
    add_header X-Frame-Options deny;
    add_header Vary Accept-Encoding;

    ssl_certificate    /fullchain.pem;
    ssl_certificate_key /privkey.pem;

    location /rust-docs {
        alias /var/www/rust-docs/;
    }
}
```

# Certificate Generation

Certbot cert generation with Linode DNS plugin

```
certbot certonly --dns-linode \  
  --dns-linode-credentials ./linode.txt -d \  
'benaaron.dev,*.benaaron.dev,sashanoraa.gay,*.sashanoraa.gay' \  
  --work-dir ./cerbot/wrk --config-dir ./cerbot/conf \  
  --logs-dir ./cerbot/log -m ben@benaaron.dev
```

Keep certbot contained to this folder

# Container

Use existing container or build my own

```
FROM python
```

```
RUN pip install radicale
```

```
CMD ["python3", "-m", "radicale", "--config", "/data/config.ini"]
```

Upload custom containers to docker hub for easy deployment

```
docker build -t zethra/radicale .
```

```
docker push zethra/radicale
```

# Questions?

Full config here: [github.com/RITlug/bens-server-config](https://github.com/RITlug/bens-server-config)

